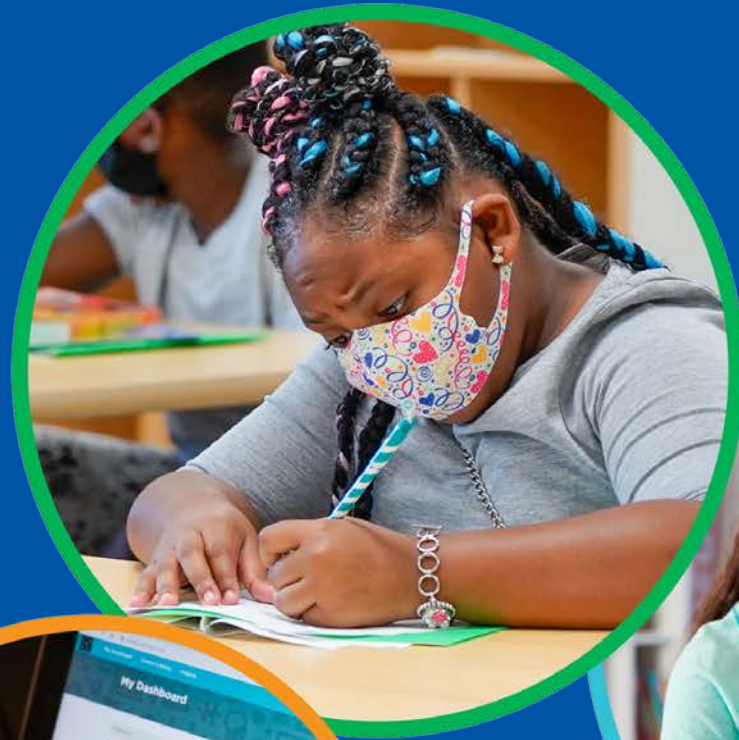


Community Health Data

BACKPACKS ON

LAPTOPS OPEN

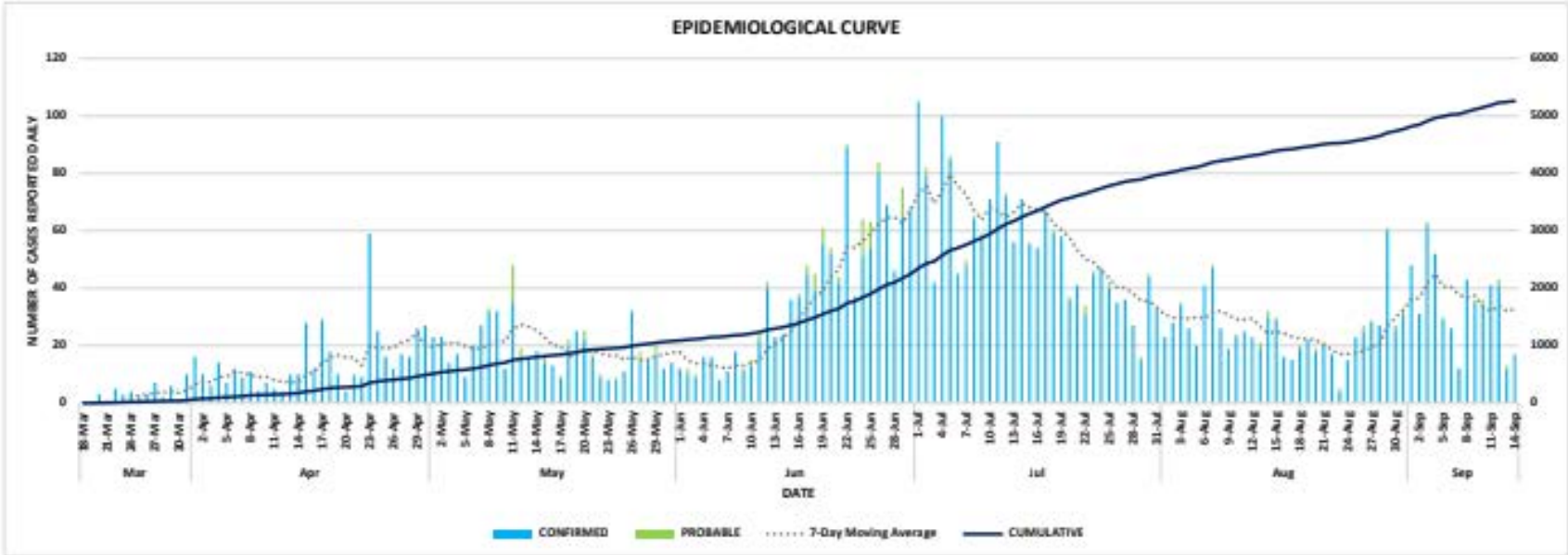
FUTURES
BRIGHT!



PREPARING STUDENTS
FOR LIFE

Community Trends

City of Cincinnati Daily New Cases as of September 14, 2020



UPDATED 9/14/2020 9:30am
*DATA IS PROVISIONAL CONTINGENT UPON COMPLETION OF CONTACT TRACING AND CONFIRMATION OF JURISDICTIONAL RESIDENCE
**IN ACCORDANCE WITH THE NEW CDC GUIDELINES, THE CDC EXPANDED (PROBABLE) CASE DEFINITION IS INCLUDED IN THIS REPORT. SEE: <https://www.cdc.gov/coronavirus/2019-ncov/covid-data/bq-surveillance.html>
**NUMBER OF INDIVIDUALS ACTIVELY MONITORED IS AN ESTIMATE, SUBJECT TO CHANGE
STATE DATA SOURCE: OHIO DISEASE REPORTING SYSTEM (ODRS)

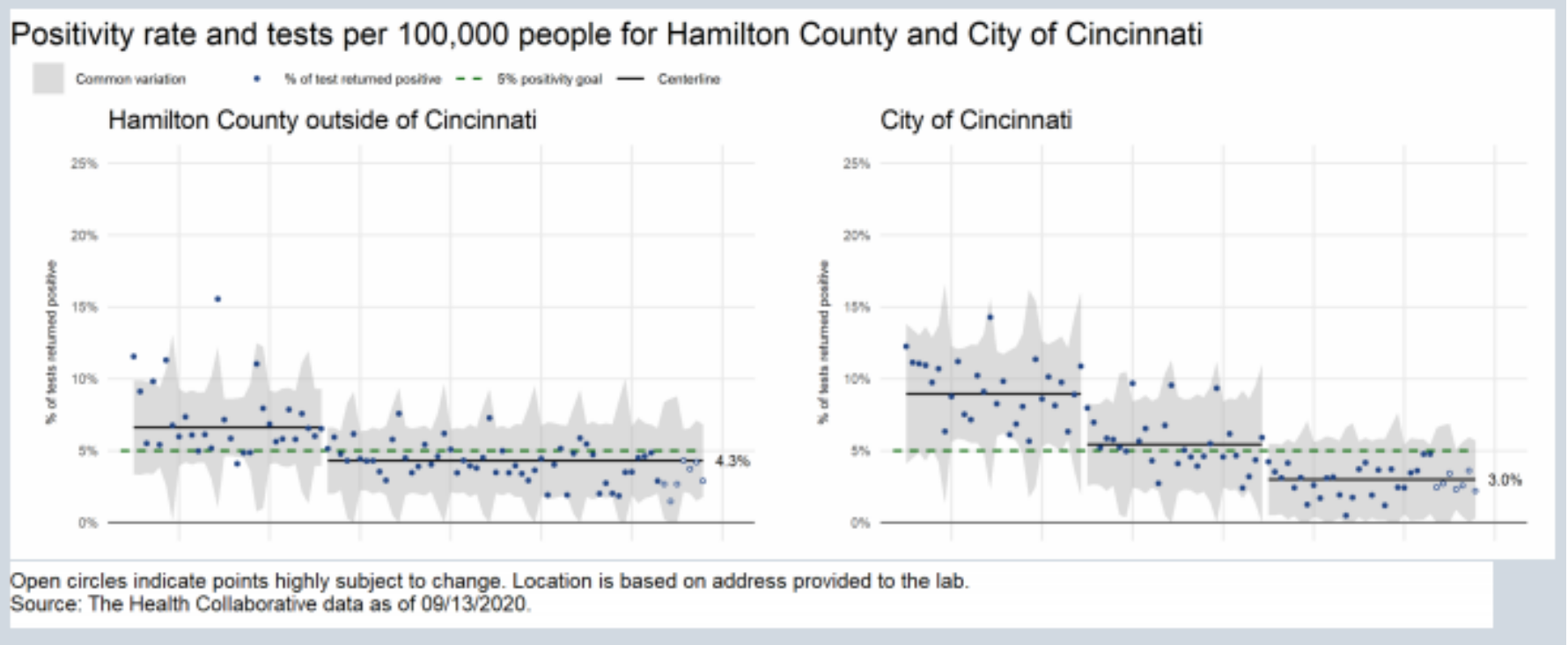


Source: [City of Cincinnati COVID-19 Dashboard](https://www.cincinnati-oh.gov/covid19/interactive-map/)
<https://www.cincinnati-oh.gov/covid19/interactive-map/>



Community Trends

Positivity Rate as of September 13, 2020



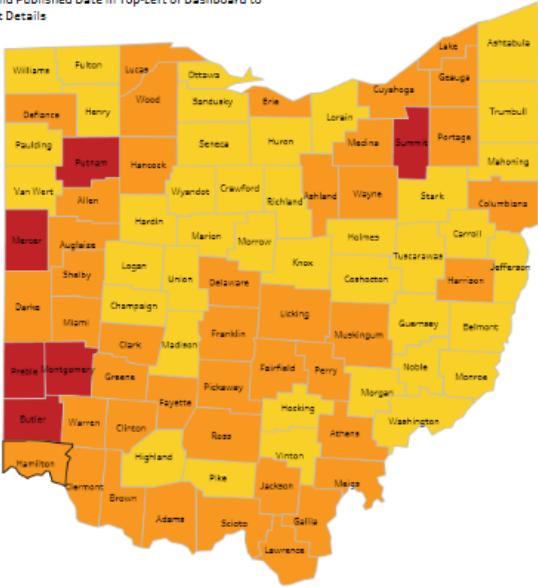
Source: [The Health Collaborative](https://www.hamiltoncountyhealth.org/covid19/) — <https://www.hamiltoncountyhealth.org/covid19/>



Community Trends

Hamilton County Alert Level as of September 10, 2020

Select a County and Published Date in Top-Left of Dashboard to view County Alert Details



Level 1 Public Emergency: active exposure and spread.	Yellow	Level 2 Public Emergency: increased exposure and spread. Exercise high degree of caution.	Orange
Level 3 Public Emergency: very high exposure and spread. Limit activities as much as possible.	Red	Level 4 Public Emergency: severe exposure and spread. Only leave home for supplies and services.	Purple

Hamilton County | Orange

County: Hamilton | Published Date: 9-10-2020

Indicator 1 - New Cases per Capita | Met

Cases over past two weeks	County Population	Cases per 100k
848	817,473	103.73

Indicator 2 - New Cases Increase | Met

Indicator 3 - Non-Congregate Cases | Met

Indicator 4 - ED Visits | Not Met

Indicator 5 - Outpatient Visits | Not Met

Indicator 6 - Hospital Admissions | Not Met

Indicator 7 - ICU Bed Occupancy | Not Met

Source: Ohio Public Health Advisory System

<https://coronavirus.ohio.gov/wps/portal/gov/covid-19/public-health-advisory-system>



BACKPACKS ON | **LAPTOPS** OPEN | **FUTURES** BRIGHT!

Visit **CPS-K12.ORG/NEWS/BACKTOSCHOOL**
for more information.



/CincinnatiPublicSchools



/user/lamCPS



@lamCPS



@lamCPS



PREPARING STUDENTS
FOR LIFE