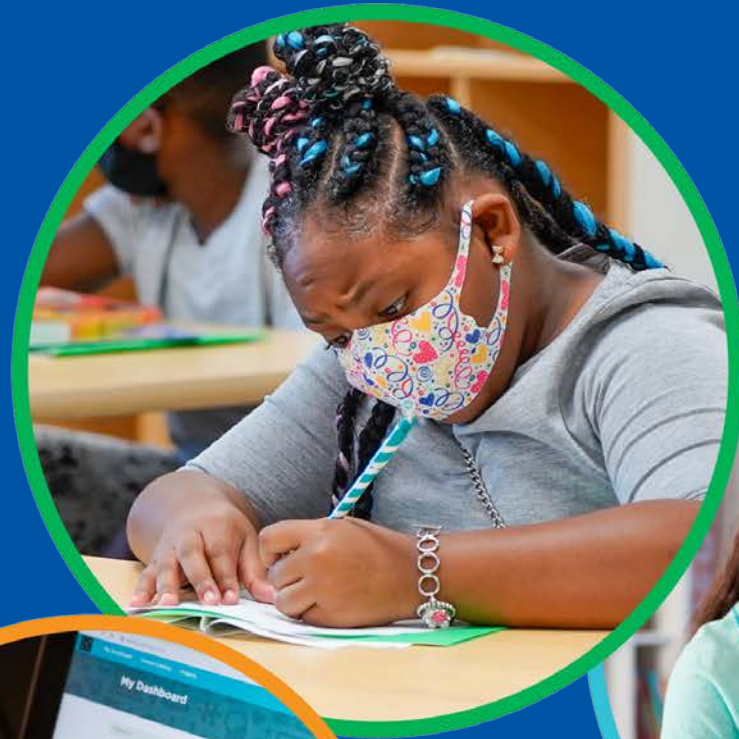


Health and Safety Updates

BACKPACKS ON

LAPTOPS OPEN

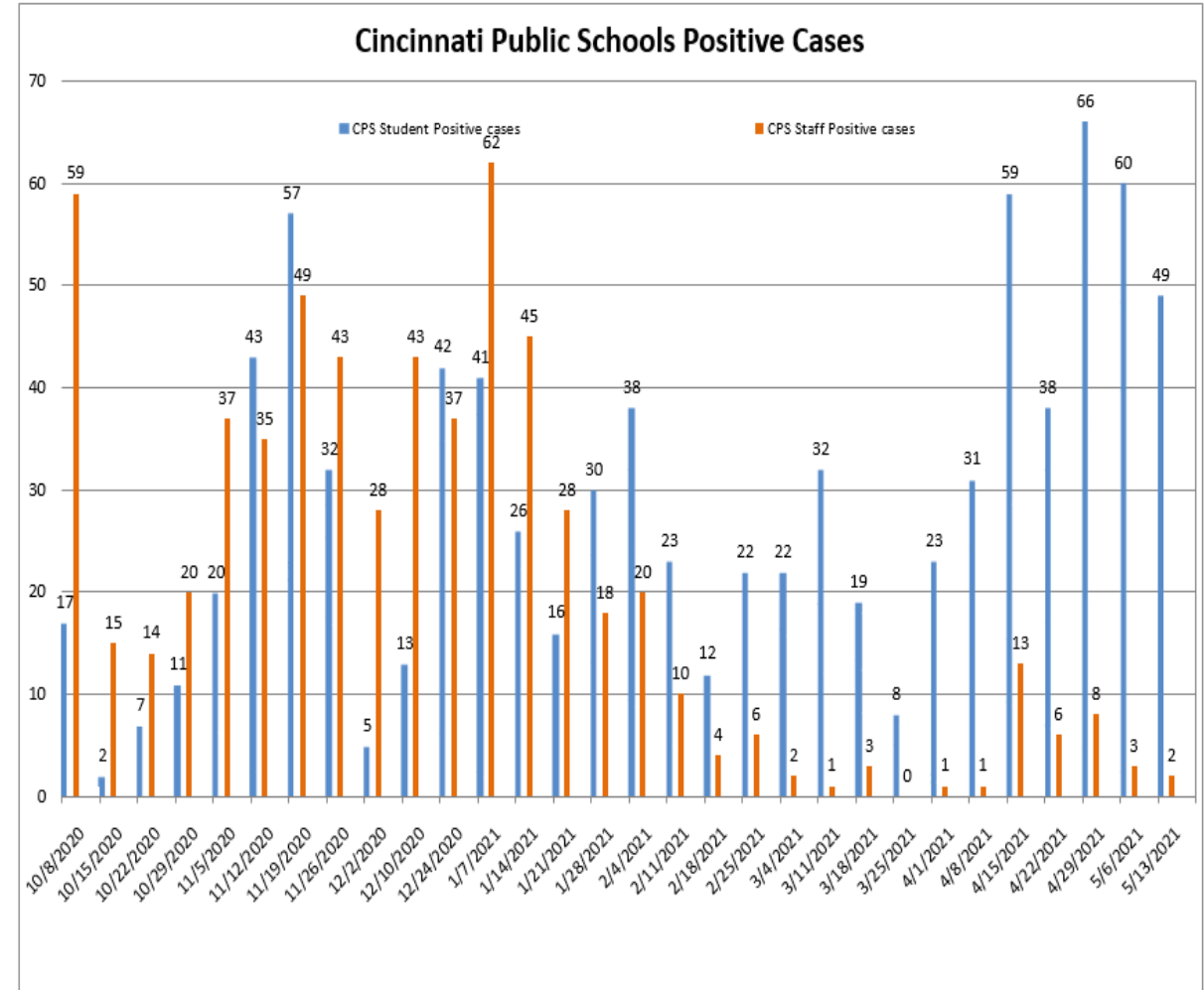
FUTURES BRIGHT!



PREPARING STUDENTS
FOR LIFE

School Measures for COVID Safety as of May 13, 2021

Measure	Value
# In School Transmissions:	85
% Implementation of safety protocols:	97.4
Number of current classes on distance learning:	1
Number of student positive cases:	1050
Number of staff positive cases:	621
Certificated Staff Attendance	91.73%
Civil Service Staff Attendance	90.65%
Percent of screening testing with positive results:	Coming Soon



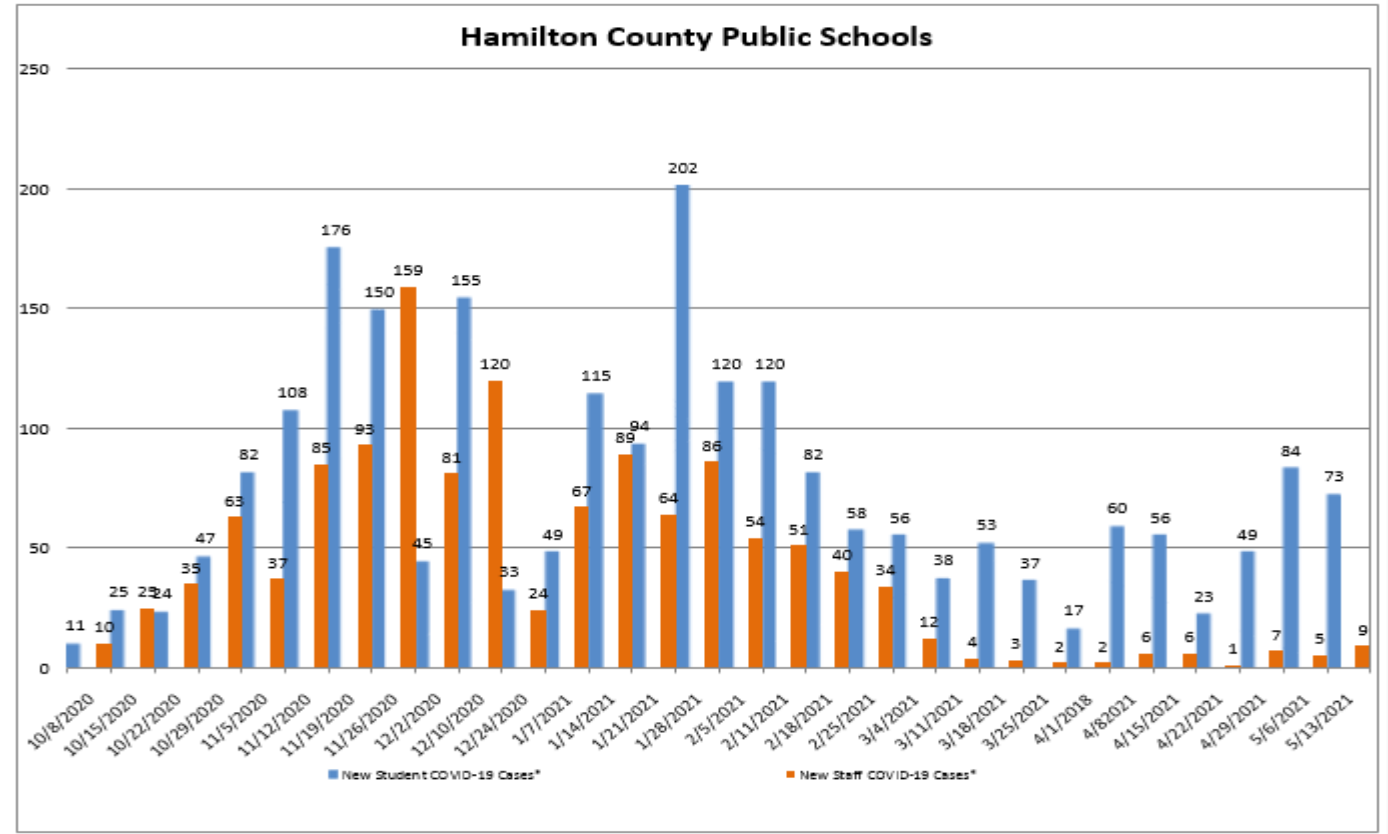
Health officials stress the importance of protection protocols in schools, including measuring the implementation of reliable protocols, maintaining protocols consistently over time, and measuring daily cases and quarantines in schools. Before September 2020, this data was not readily available for our region. However as charter, non-public, and public schools began opening for in-person learning in Hamilton County, and Ohio Department of Health created a reporting system for school COVID-19 cases, this data is now readily available to measure the amount of COVID-19 spread in schools. Early evidence is that there is little to no spread within schools in our region, however health officials are working on a system to better utilize the new data from schools that have re-opened in person.



Community Trends

Hamilton County School Districts as of
May 13, 2021

	Public Schools	Charter Schools	Private Schools	Total
New Student COVID-19 Cases*	73	0	15	88
New Staff COVID-19 Cases*	9	0	0	9
Cumulative Student COVID-19 Cases**	3073	111	1421	4605
Cumulative Staff COVID-19 Cases**	1771	100	484	2355
Total number of students enrolled	114,225	6,963	34,838	156,026



*New cases are for the past one week. **Cumulative cases beginning 9/7/20

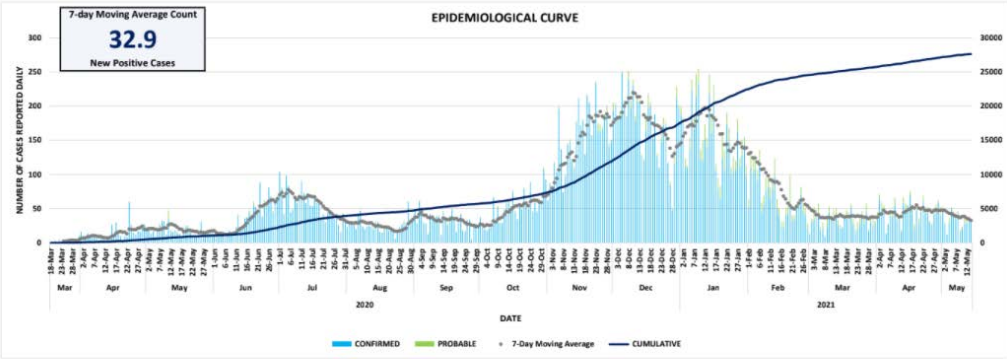
Health officials stress the importance of protection protocols in schools, including measuring the implementation of reliable protocols, maintaining protocols consistently over time, and measuring daily cases and quarantines in schools. Before September 2020, this data was not readily available for our region. However as charter, non-public, and public schools began opening for in-person learning in Hamilton County, and Ohio Department of Health created a reporting system for school COVID-19 cases, this data is now readily available to measure the amount of COVID-19 spread in schools. Early evidence is that there is little to no spread within schools in our region, however health officials are working on a system to better utilize the new data from schools that have re-opened in person.

For more information about measuring protection protocols, see Source: Ohio Department of Health COVID-19 Dashboard for Schools: <https://coronavirus.ohio.gov/wps/portal/gov/covid-19/dashboards/schools-and-children/schools>



Community Trends

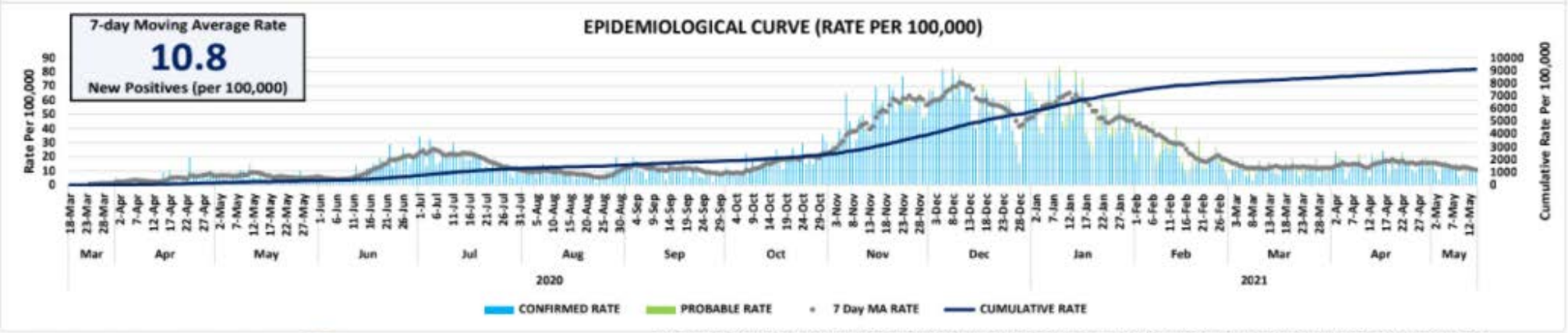
City of Cincinnati Daily New Cases as of May 14, 2021



UPDATED 5/14/2021 9:30am
 *DATA SHOWN FOR TODAY REFLECTS PAST 24 HOURS
 **DATA IS PROVISIONAL CONTINGENT UPON COMPLETION OF CONTACT TRACING AND CONFIRMATION OF JURISDICTIONAL RESIDENCE
 ***IN ACCORDANCE WITH THE NEW CDC GUIDELINES, THE CDC EXPANDED (PROBABLE) CASE DEFINITION IS INCLUDED IN THIS REPORT. SEE: <https://www.cdc.gov/coronavirus/2019-ncov/covid-data/faq-surveillance.html>
 **NUMBER OF INDIVIDUALS ACTIVELY MONITORED IS AN ESTIMATE, SUBJECT TO CHANGE
 STATE DATA SOURCE: OHIO DISEASE REPORTING SYSTEM (ODRS)



The City of Cincinnati Epidemiological Curve shows the cumulative number of new cases (dark blue line), the daily number of new COVID-19 cases in the city (light blue column), and the 7-Day moving average of daily new cases (gray dotted line). The 7-Day moving average demonstrates the level of virus in the community. Health officials recommend using the 7-Day moving average and the suggested thresholds from the Harvard Global Health Institute based on Daily New Cases per 100,000 individuals (see further explanation of these thresholds at: [Source: The Health Collaborative — https://www.cincinnati-oh.gov/health/covid-19/covid-19-measures-to-inform-school-district-decisions/](https://www.cincinnati-oh.gov/health/covid-19/covid-19-measures-to-inform-school-district-decisions/))



*DATA IS PROVISIONAL CONTINGENT UPON COMPLETION OF CONTACT TRACING AND CONFIRMATION OF JURISDICTIONAL RESIDENCE
 *Reporting of hospitalizations may be delayed. Data displayed illustrates current reporting
 *WEEKLY TRENDS UPDATED DAILY AT 9:30AM

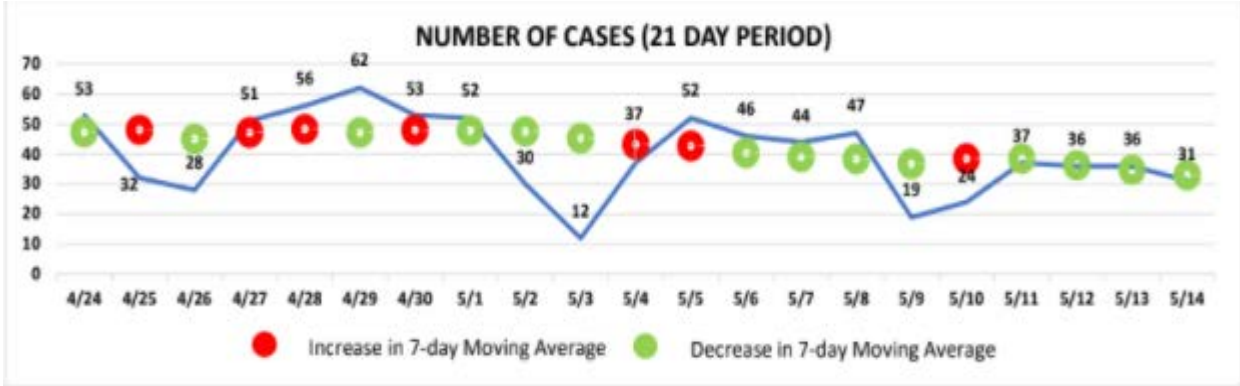


BACKPACKS ON | LAPTOPS OPEN | FUTURES BRIGHT!



Community Trends

Number of Cases as of May 14, 2021



The City of Cincinnati Number of Cases in 14-Day Period shows the daily number of new cases (dark blue line) and the 7-Day moving average (red/green dots). The 7-Day moving average dot is red if the value increased from the prior day and green if it decreased from the prior day. Health officials recommend using the 7-Day moving average suggested thresholds from the Harvard Global Health Institute AND the 7-Day moving average 14-Day trends. See further explanation of these thresholds at: Source: The Health Collaborative — <https://www.cincinnati-oh.gov/health/covid-19/covid-19-measures-to-inform-school-district-decisions/>

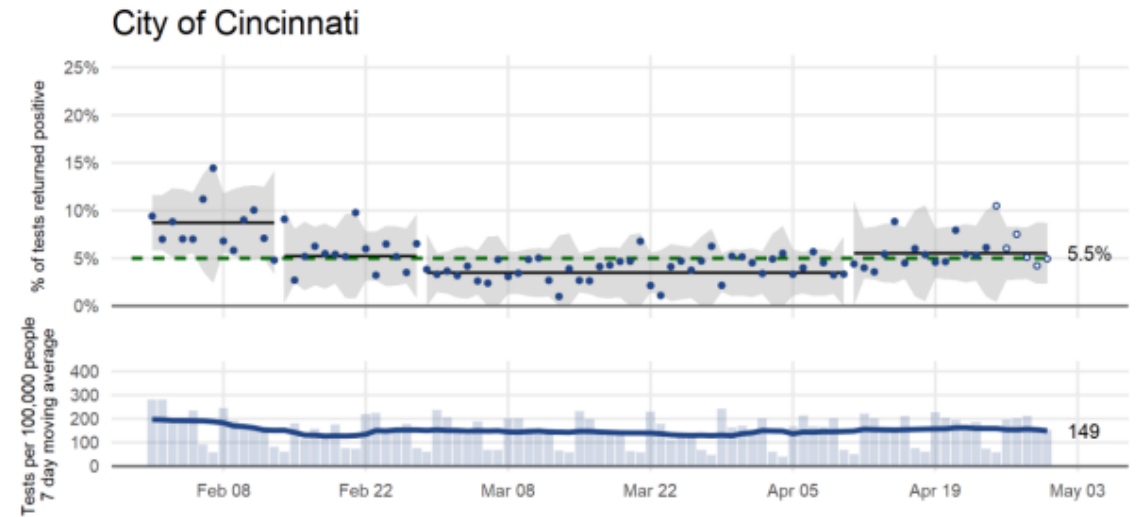
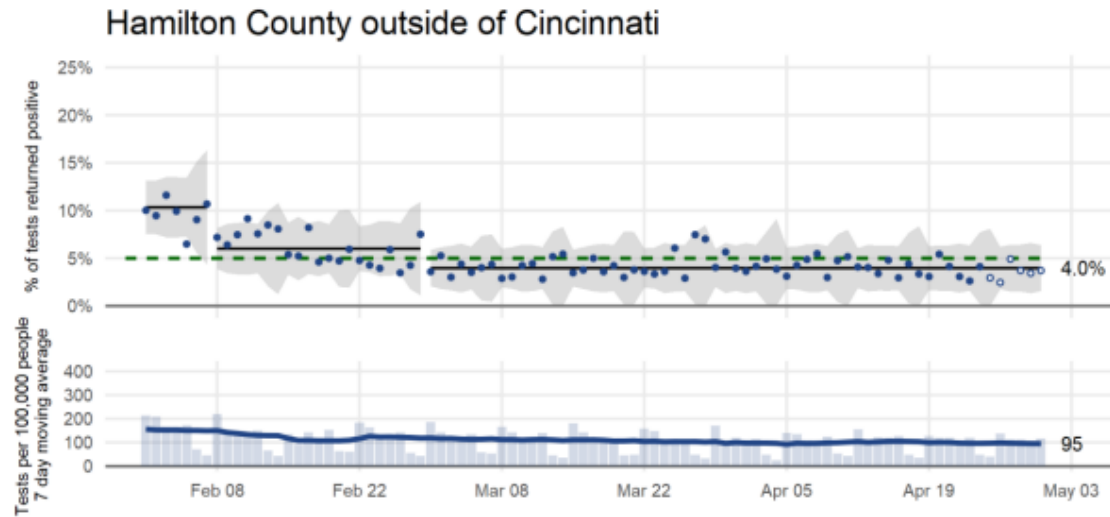


Community Trends

Positivity Rate as of May 2, 2021

Positivity rate and tests per 100,000 people for Hamilton County and City of Cincinnati

Common variation • % of test returned positive — Centerline - - 5% positivity goal



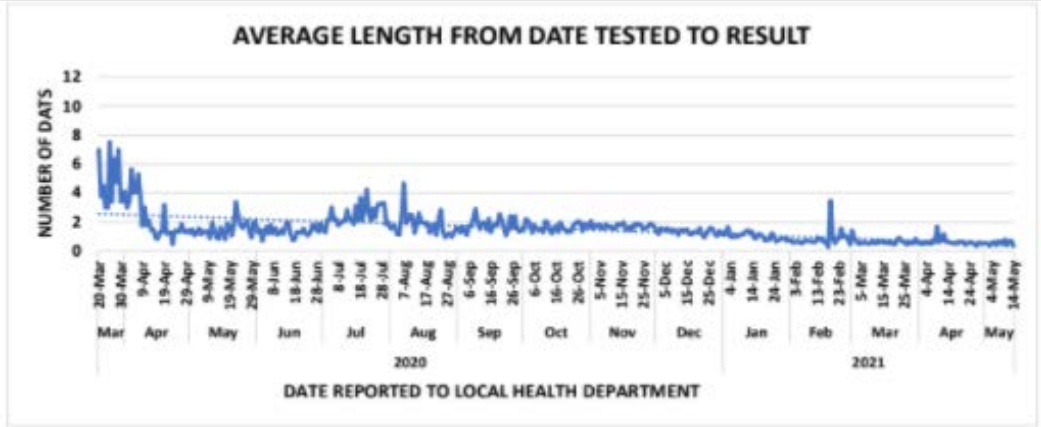
Open circles indicate points highly subject to change. Location is based on address provided to the lab.

Source: The Health Collaborative data as of 5/2/21

The positivity rate is the percent of COVID-19 tests that are positive out of all the tests administered each day. The rate is shown for the City of Cincinnati on the right, and for the county outside of the City of Cincinnati on the left. Health officials recommend a positivity rate below 5%. Source: The Health Collaborative — <https://www.cincinnati-oh.gov/health/covid-19/covid-19-measures-to-inform-school-district-decisions/>

Community Trends

Average Length from Date Tested to Result as of May 14, 2021



The City of Cincinnati Average Length from Date Tested to Result measure shows the average number of days from test administered to test result reported to local health department for positive results. This measure indicates whether our testing and reporting system can adequately handle the demand and is important to identifying and isolating positive cases. Source: Source: City of Cincinnati COVID-19 Dashboard

<https://www.cincinnati-oh.gov/covid19/interactive-map/>



BACKPACKS ON | **LAPTOPS** OPEN | **FUTURES** BRIGHT!

Visit **CPS-K12.ORG/NEWS/BACKTOSCHOOL**
for more information.



/CincinnatiPublicSchools



/user/lamCPS



@lamCPS



@lamCPS



PREPARING STUDENTS
FOR LIFE