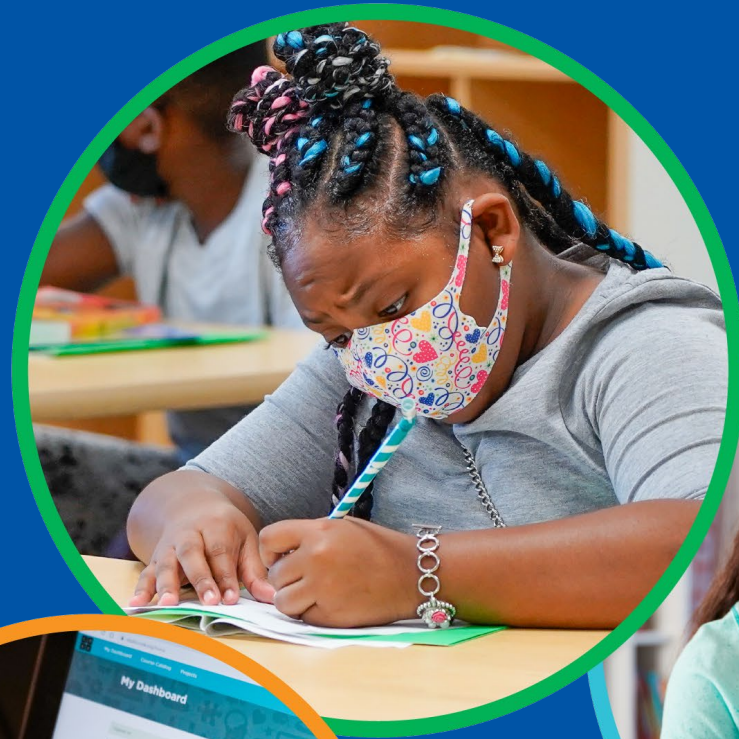


# Community Health Data

BACKPACKS ON

LAPTOPS OPEN

FUTURES  
BRIGHT!



PREPARING STUDENTS  
**FOR LIFE**



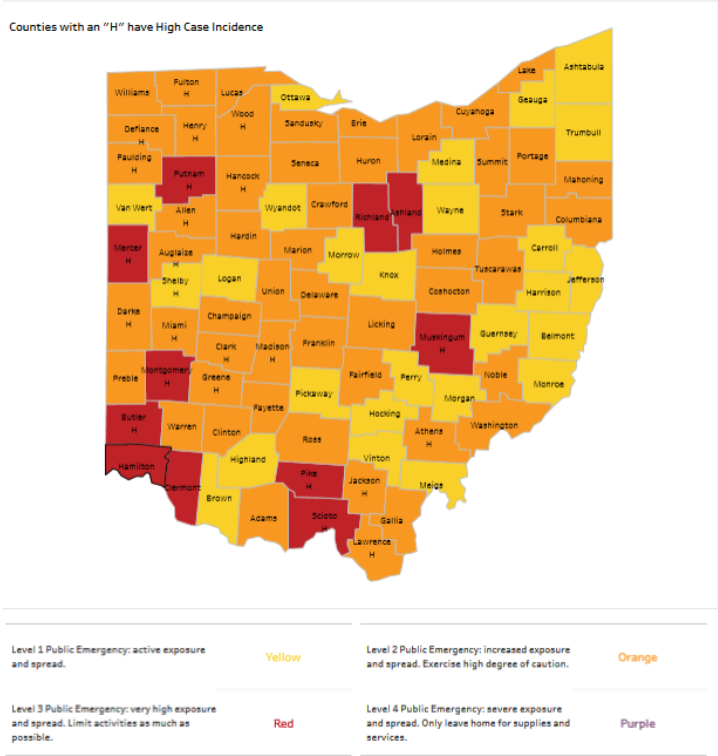






# Community Trends

## Hamilton County Alert Level as of October 1, 2020



Hamilton County | Red

County: Hamilton | Published Date: 10-1-2020

Indicator 1 - New Cases per Capita | Met

Cases over past two weeks	County Population	Cases per 100k
737	817,473	90.16

Indicator 2 - New Cases Increase | Not Met

Indicator 3 - Non-Congregate Cases | Met

Indicator 4 - ED Visits | Not Met

Indicator 5 - Outpatient Visits | Met

Indicator 6 - Hospital Admissions | Met

Indicator 7 - ICU Bed Occupancy | Not Met

Source: Ohio Public Health Advisory System  
<https://coronavirus.ohio.gov/wps/portal/gov/covid-19/public-health-advisory-system>



**BACKPACKS** ON | **LAPTOPS** OPEN | **FUTURES** BRIGHT!

---

Visit **CPS-K12.ORG/NEWS/BACKTOSCHOOL**  
for more information.



/CincinnatiPublicSchools



/user/lamCPS



@lamCPS



@lamCPS



PREPARING STUDENTS  
**FOR LIFE**