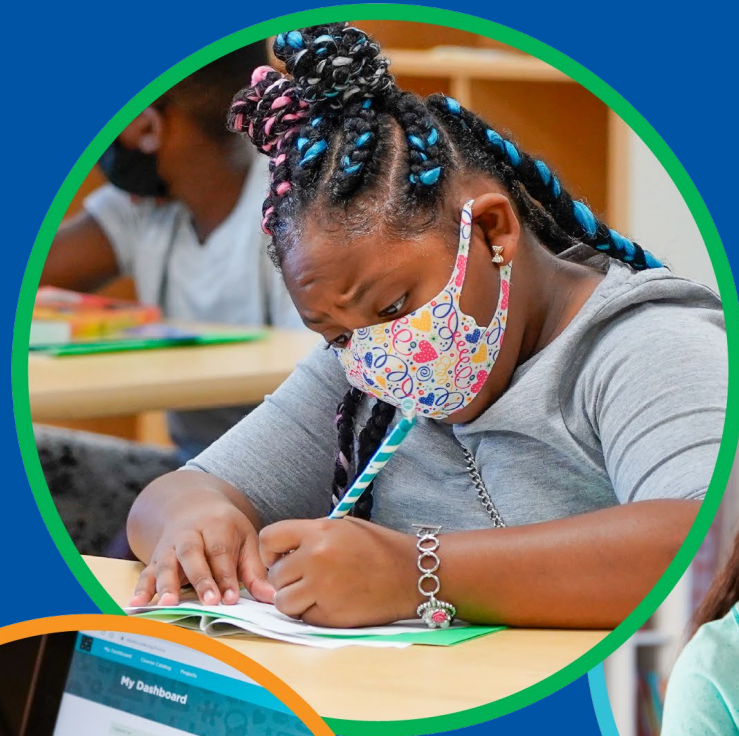


# Community Health Data

BACKPACKS ON

LAPTOPS OPEN

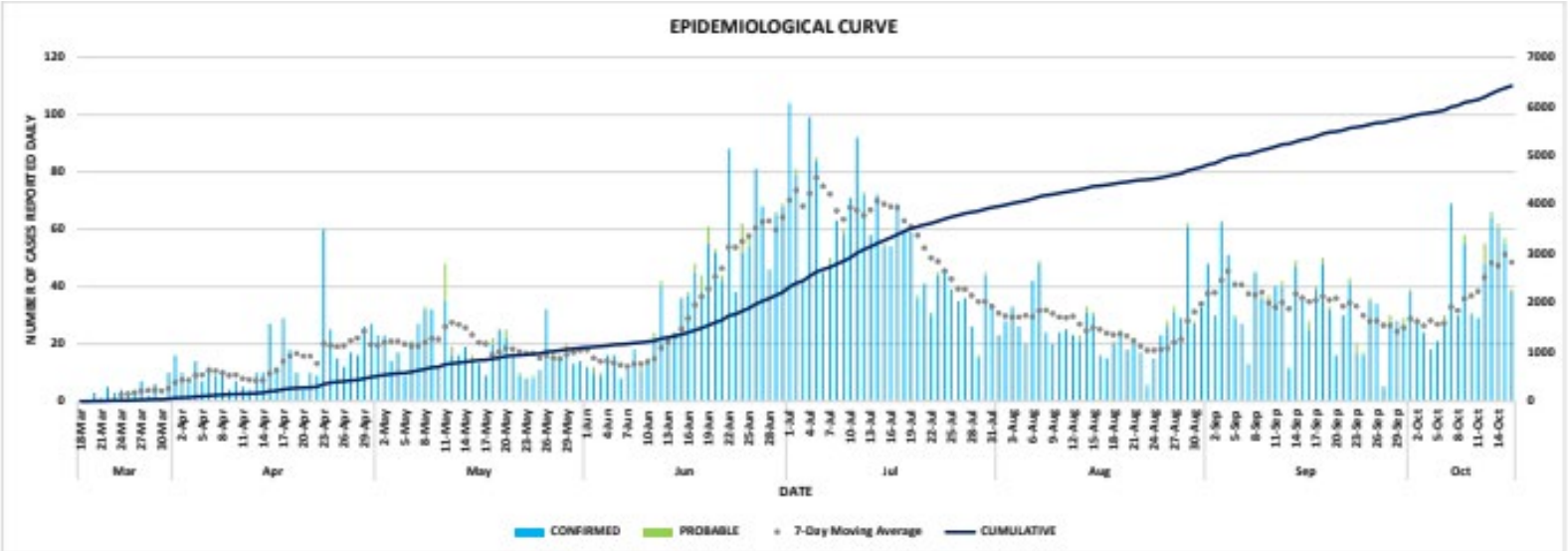
FUTURES  
BRIGHT!



PREPARING STUDENTS  
**FOR LIFE**

# Community Trends

## City of Cincinnati Daily New Cases as of October 16, 2020



UPDATED 10/16/2020 9:30am

\*DATA IS PROVISIONAL CONTINGENT UPON COMPLETION OF CONTACT TRACING AND CONFIRMATION OF JURISDICTIONAL RESIDENCE

\*\*IN ACCORDANCE WITH THE NEW CDC GUIDELINES, THE CDC EXPANDED (PROBABLE) CASE DEFINITION IS INCLUDED IN THIS REPORT. SEE: <https://www.cdc.gov/coronavirus/2019-ncov/covid-data/jaq-surveillance.html>

\*\*NUMBER OF INDIVIDUALS ACTIVELY MONITORED IS AN ESTIMATE, SUBJECT TO CHANGE

STATE DATA SOURCE: OHIO DISEASE REPORTING SYSTEM (ODRS)

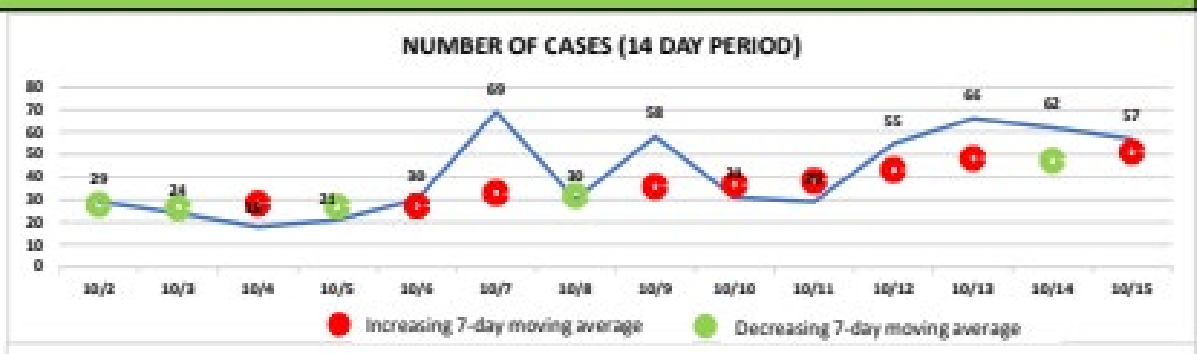


Source: [City of Cincinnati COVID-19 Dashboard](https://www.cincinnati-oh.gov/covid19/interactive-map/)  
<https://www.cincinnati-oh.gov/covid19/interactive-map/>



# Community Trends

## Number of Cases as of October 16, 2020

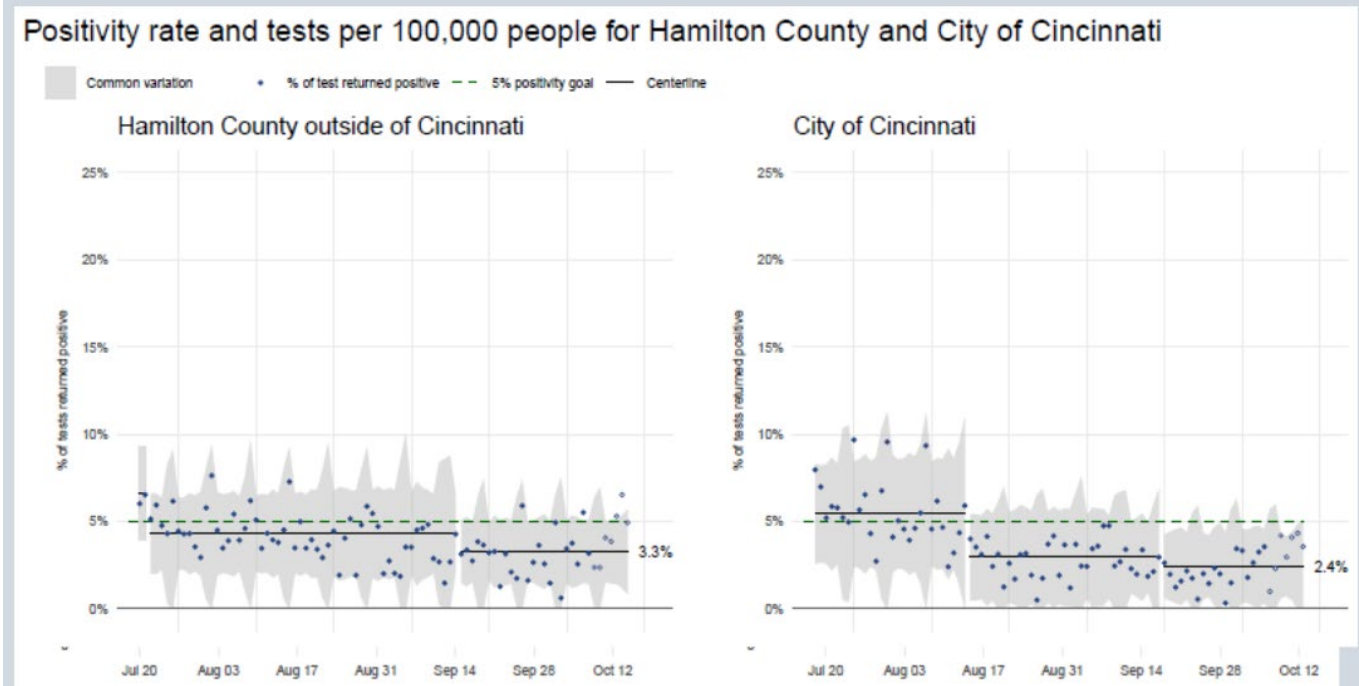


Source: Source: City of Cincinnati COVID-19 Dashboard  
<https://www.cincinnati-oh.gov/covid19/interactive-map/>



# Community Trends

## Positivity Rate as of October 12, 2020

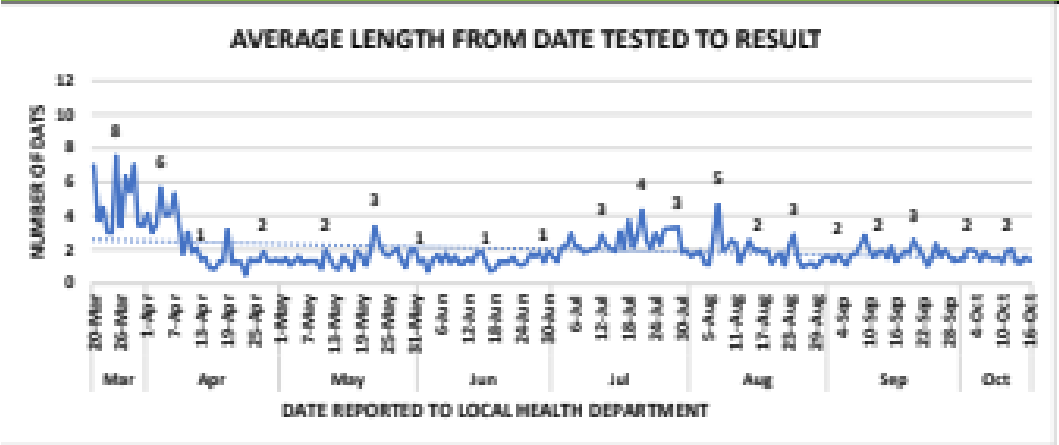


Source: The Health Collaborative — <https://www.cincinnati-oh.gov/health/covid-19/covid-19-measures-to-inform-school-district-decisions/>



# Community Trends

## Average Length from Date Tested to Result as of October 16, 2020

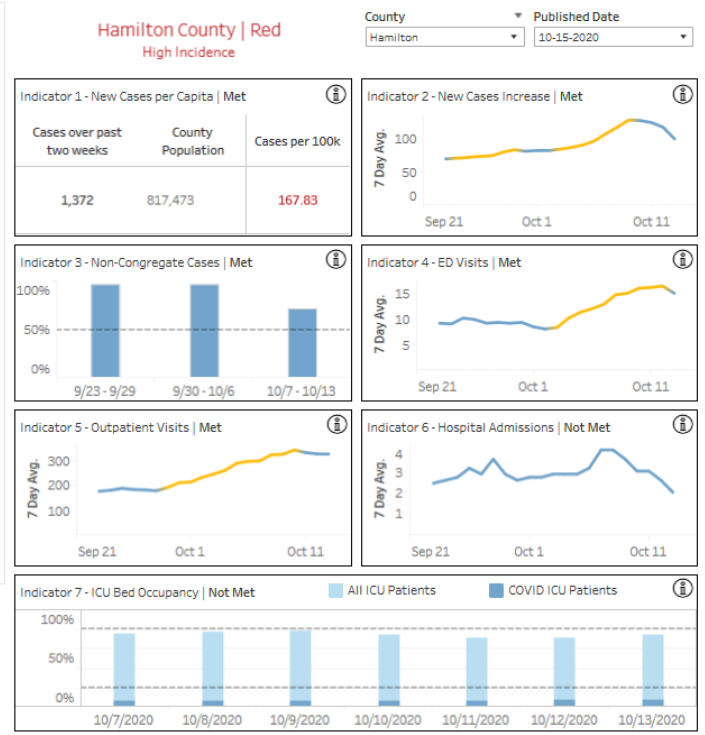
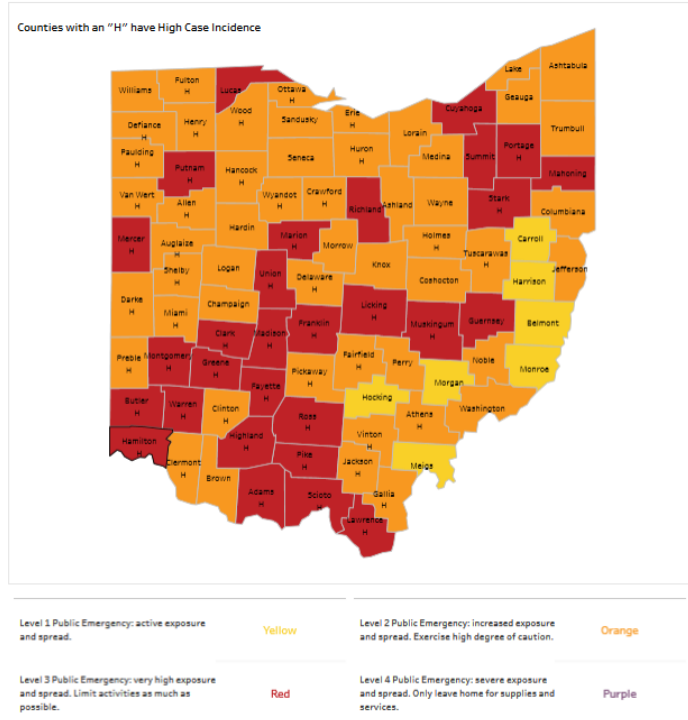


Source: Source: City of Cincinnati COVID-19 Dashboard  
<https://www.cincinnati-oh.gov/covid19/interactive-map/>



# Community Trends

## Hamilton County Alert Level as of October 15, 2020



Source: Ohio Public Health Advisory System

<https://coronavirus.ohio.gov/wps/portal/gov/covid-19/public-health-advisory-system>

# Community Trends

## Hamilton County Public School Districts as of October 15, 2020

New Student COVID-19 Cases\*: **25**

New Staff COVID-19 Cases\*: **25**

Cumulative Student COVID-19 Cases\*\*: **83**

Cumulative Staff COVID-19 Cases\*\*: **79**

Total number of students enrolled: **114,225**

\*New cases are for the past one week. \*\*Cumulative cases beginning 9/7/20

Source: [Ohio Department of Health COVID-19 Dashboard for Schools](https://coronavirus.ohio.gov/wps/portal/gov/covid-19/dashboards/schools-and-children/schools)

<https://coronavirus.ohio.gov/wps/portal/gov/covid-19/dashboards/schools-and-children/schools>

**BACKPACKS** ON | **LAPTOPS** OPEN | **FUTURES** BRIGHT!

---

Visit **CPS-K12.ORG/NEWS/BACKTOSCHOOL**  
for more information.



/CincinnatiPublicSchools



/user/lamCPS



@lamCPS



@lamCPS



PREPARING STUDENTS  
**FOR LIFE**