

COVID-19 Measures to Inform School Planning

BACKPACKS ON

LAPTOPS OPEN

FUTURES
BRIGHT!



PREPARING STUDENTS
FOR LIFE

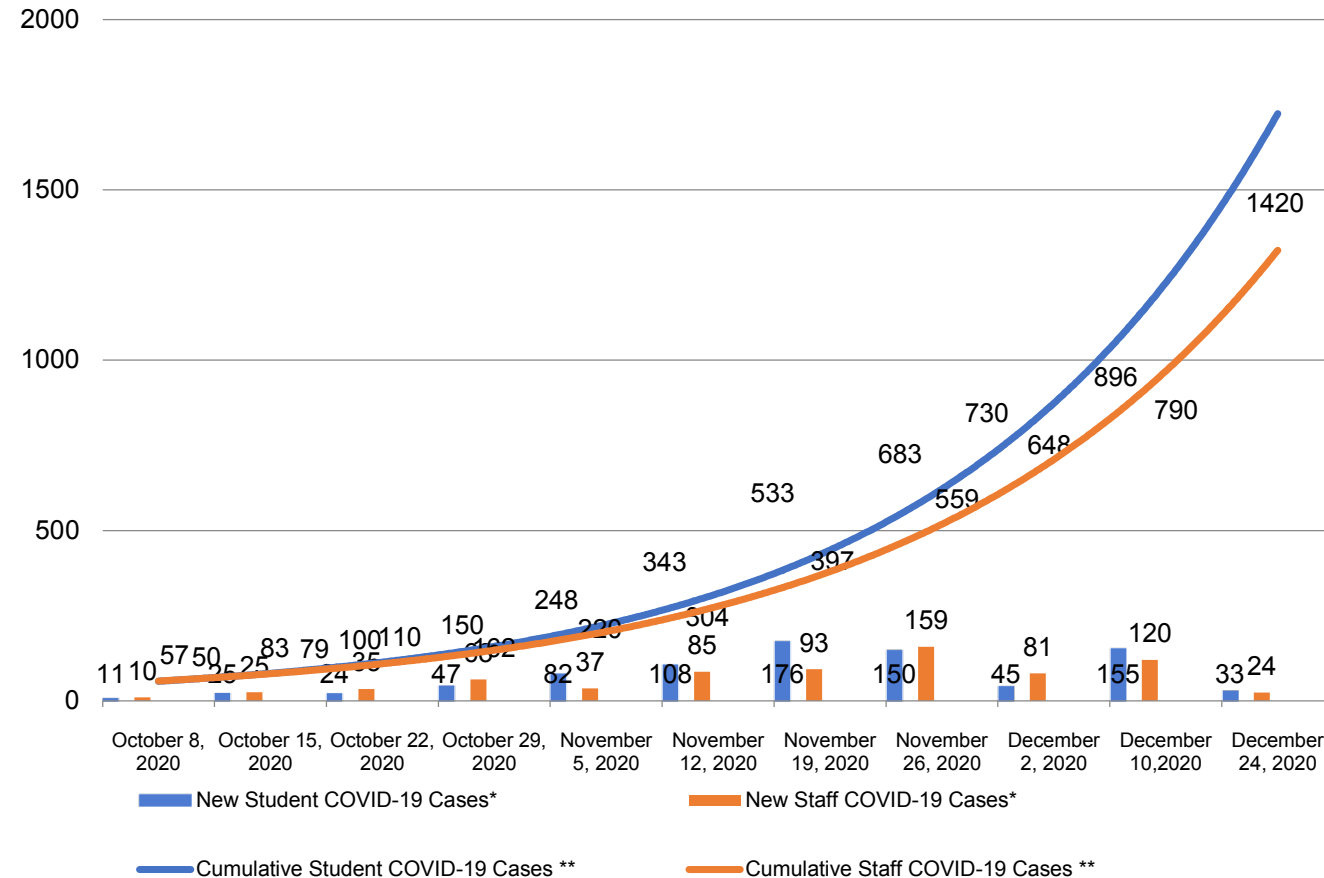
Community Trends

Hamilton County Public Schools

2127

Hamilton County School Districts as of December 24, 2020

	Public Schools	Charter Schools	Private Schools	Total
New Student COVID-19 Cases*	20	0	13	33
New Staff COVID-19 Cases*	12	0	12	24
Cumulative Student COVID-19 Cases**	1271	83	773	2127
Cumulative Staff COVID-19 Cases**	1041	68	311	1420
Total number of students enrolled	114,225	6,963	34,838	156,026



*New cases are for the past one week. **Cumulative cases beginning 9/7/20

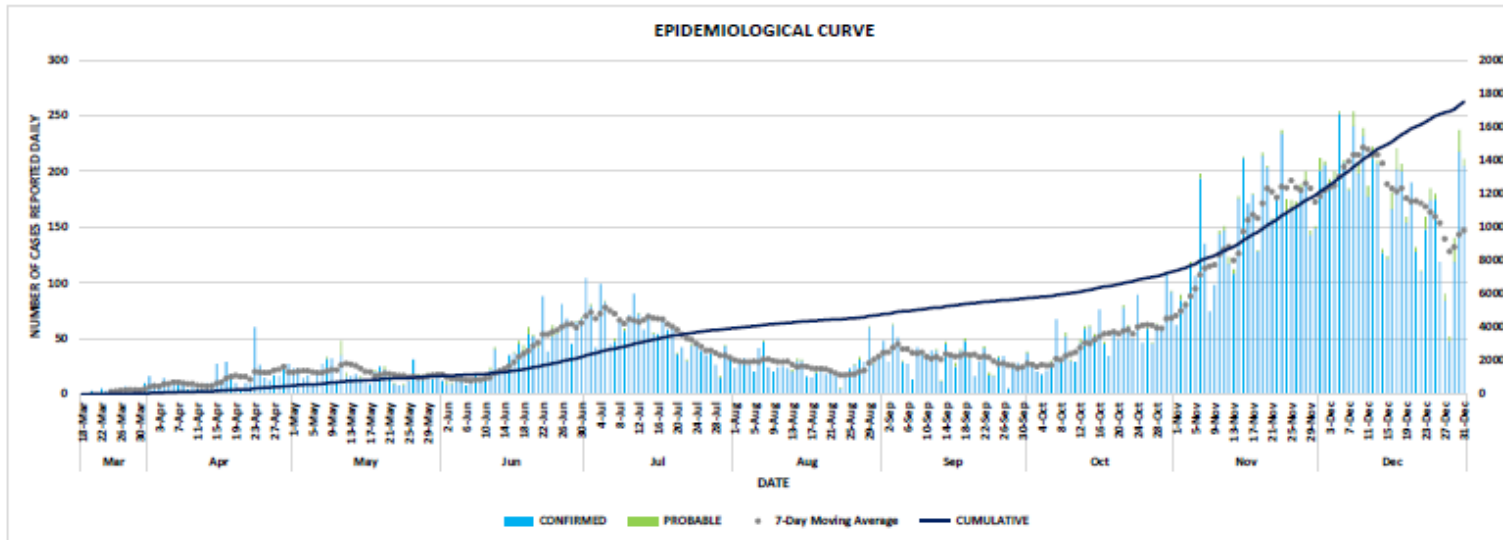
Health officials stress the importance of protection protocols in schools, including measuring the implementation of reliable protocols, maintaining protocols consistently over time, and measuring daily cases and quarantines in schools. Before September 2020, this data was not readily available for our region. However as charter, non-public, and public schools began opening for in-person learning in Hamilton County, and Ohio Department of Health created a reporting system for school COVID-19 cases, this data is now readily available to measure the amount of COVID-19 spread in schools. Early evidence is that there is little to no spread within schools in our region, however health officials are working on a system to better utilize the new data from schools that have re-opened in person.

For more information about measuring protection protocols, see Source: Ohio Department of Health COVID-19 Dashboard for Schools: <https://coronavirus.ohio.gov/wps/portal/gov/covid-19/dashboards/schools-and-children/schools>



Community Trends

City of Cincinnati Daily New Cases as of December 31, 2020



UPDATED 12/31/2020 9:30am

DATA SHOWN FOR TODAY REFLECTS PAST 24 HOURS

*DATA IS PROVISIONAL CONTINGENT UPON COMPLETION OF CONTACT TRACING AND CONFIRMATION OF JURISDICTIONAL RESIDENCE

**IN ACCORDANCE WITH THE NEW CDC GUIDELINES, THE CDC EXPANDED (PROBABLE) CASE DEFINITION IS INCLUDED IN THIS REPORT. SEE: <https://www.cdc.gov/coronavirus/2019-nCoV/covid-data/faq-surveillance.html>

**NUMBER OF INDIVIDUALS ACTIVELY MONITORED IS AN ESTIMATE, SUBJECT TO CHANGE

STATE DATA SOURCE: OHIO DISEASE REPORTING SYSTEM (ODRS)

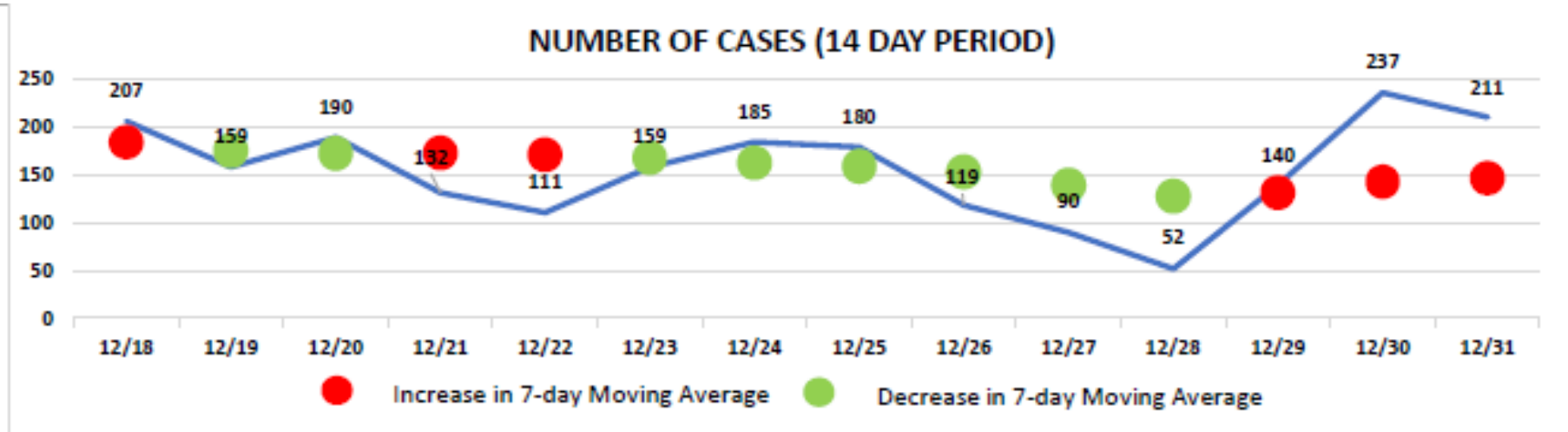


The City of Cincinnati Epidemiological Curve shows the cumulative number of new cases (dark blue line), the daily number of new COVID-19 cases in the city (light blue column), and the 7-Day moving average of daily new cases (gray dotted line). The 7-Day moving average demonstrates the level of virus in the community. Health officials recommend using the 7-Day moving average and the suggested thresholds from the Harvard Global Health Institute based on Daily New Cases per 100,000 individuals (see further explanation of these thresholds at: [Source: The Health Collaborative — https://www.cincinnati-oh.gov/health/covid-19/covid-19-measures-to-inform-school-district-decisions/](https://www.cincinnati-oh.gov/health/covid-19/covid-19-measures-to-inform-school-district-decisions/))



Community Trends

Number of Cases as of December 31, 2020



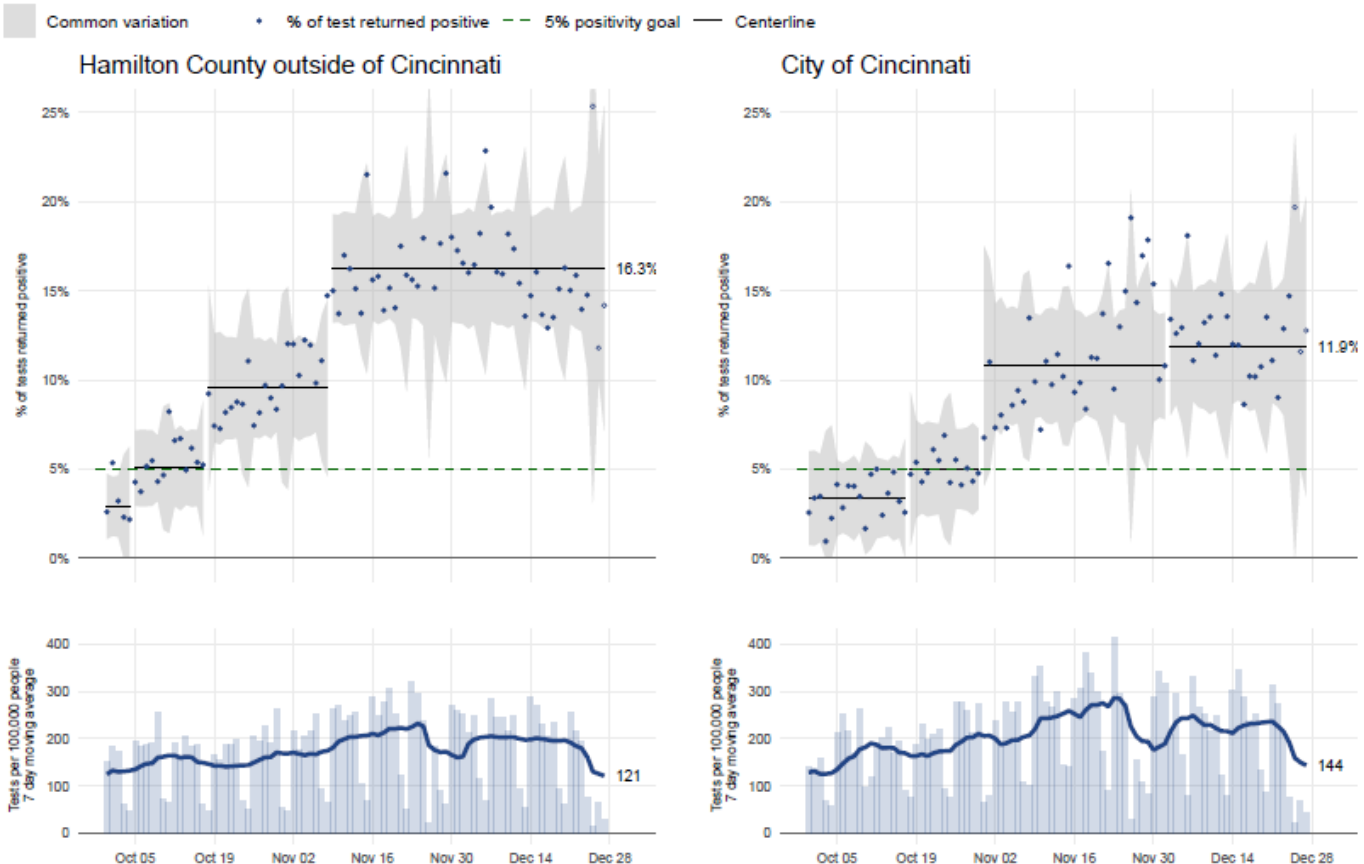
The City of Cincinnati Number of Cases in 14-Day Period shows the daily number of new cases (dark blue line) and the 7-Day moving average (red/green dots). The 7-Day moving average dot is red if the value increased from the prior day and green if it decreased from the prior day. Health officials recommend using the 7-Day moving average suggested thresholds from the Harvard Global Health Institute AND the 7-Day moving average 14-Day trends. See further explanation of these thresholds at: Source: The Health Collaborative — <https://www.cincinnati-oh.gov/health/covid-19/covid-19-measures-to-inform-school-district-decisions/>



Community Trends

Positivity Rate as of December 29, 2020

Positivity rate and tests per 100,000 people for Hamilton County and City of Cincinnati



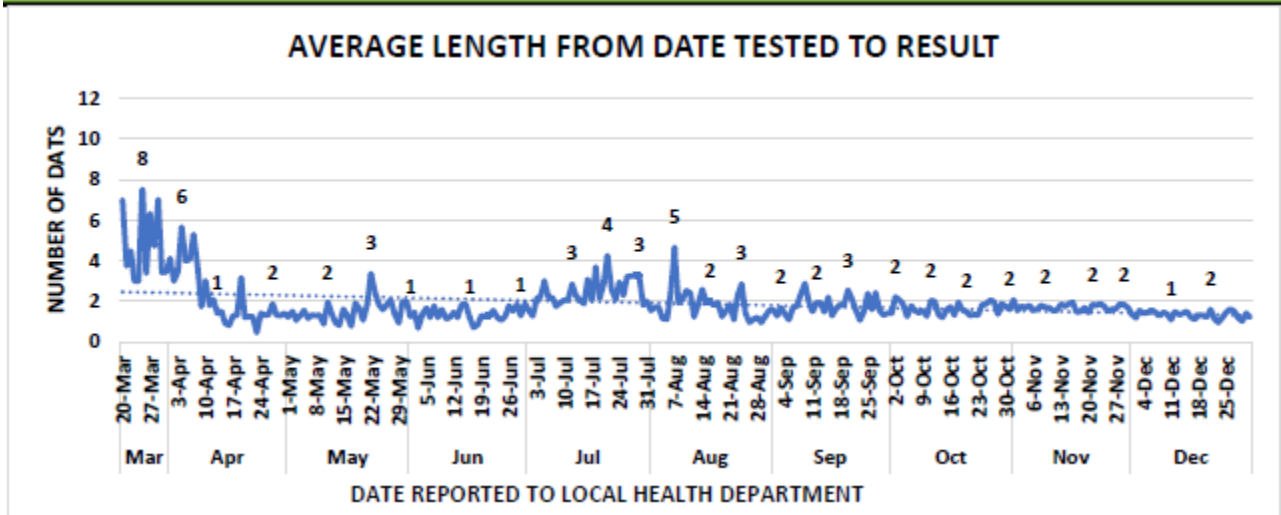
The positivity rate is the percent of COVID-19 tests that are positive out of all the tests administered each day. The rate is shown for the City of Cincinnati on the right, and for the county outside of the City of Cincinnati on the left. Health officials recommend a positivity rate below 5%. Source: The Health Collaborative — <https://www.cincinnati-oh.gov/health/covid-19/covid-19-measures-to-inform-school-district-decisions/>

Open circles indicate points highly subject to change. Location is based on address provided to the lab. Source: The Health Collaborative data as of 12/29/2020.



Community Trends

Average Length from Date Tested to Result as of December 31, 2020



The City of Cincinnati Average Length from Date Tested to Result measure shows the average number of days from test administered to test result reported to local health department for positive results. This measure indicates whether our testing and reporting system can adequately handle the demand and is important to identifying and isolating positive cases. Source: City of Cincinnati COVID-19 Dashboard

<https://www.cincinnati-oh.gov/covid19/interactive-map/>



BACKPACKS ON | **LAPTOPS** OPEN | **FUTURES** BRIGHT!

Visit **CPS-K12.ORG/NEWS/BACKTOSCHOOL**
for more information.



/CincinnatiPublicSchools



/user/lamCPS



@lamCPS



@lamCPS



PREPARING STUDENTS
FOR LIFE