

**Services**

The district ensures equal opportunity for all students identified as gifted to receive services offered by the district.

**Withdrawal**

If at anytime, a student wishes to withdraw from gifted programs or services, the request should be written by the parent or child to the building administrator. If children request to withdraw, parents will be notified.

**Appeal Procedure**

An appeal by the parent is the reconsideration of the results of any part of the identification process which would include:

Parents should submit a letter to the Director of Curriculum, or designee, outlining the nature of the concern.

The Director of Curriculum will convene a meeting with the parent/guardian, which may include other school personnel.

The Director of Curriculum, or designee, will issue a written final decision within 30 days of the appeal. This written notice should include the reason for the decision(s).

If you have questions, please call your building principal or

**Betsy Onnen Singh at 363-0196**  
**Coordinator of Gifted**  
**Programming**  
**Cincinnati Public Schools**

## **Cincinnati Public Schools**

---

# *DISTRICT POLICY AND PLAN FOR THE IDENTIFICATION OF CHILDREN WHO ARE GIFTED*

---

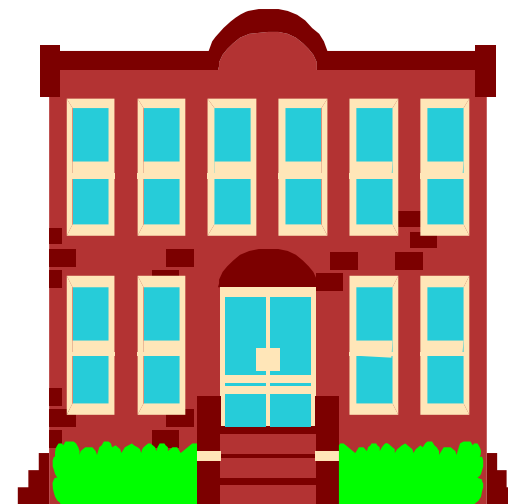
## Information for Parents

This pamphlet should be used with:

**INFORMATION FOR PARENTS**  
*Assessment Instruments used by the  
District for Gifted Identification*

and

**IDENTIFICATION  
OF CHILDREN  
WHO ARE GIFTED**  
*Excerpts from HB 282*



## Definition

“Gifted” means students who perform or show potential for performing at remarkably high levels of accomplishment when compared to others of their age, experience, or environment and who are identified under division (A), (B), (C), or (D) of section 3324.03 of the Ohio Revised Code.

## Screening and Identification

The district uses a three-part approach to assess students who perform or show potential for performing at high levels of accomplishment in the areas of superior cognitive ability, specific academic ability, creativity, and visual and/or performing arts.

### *Stage I*

#### Pre-Assessment

The pre-assessment part of the process involves gathering student data from a variety of sources including teacher, parent, and peer nominations, grades, portfolios, observations, review of student records, and outstanding products or performances, etc. All students are involved in the pre-assessment pool.

By using the pre-assessment process, the district ensures equal access to screening and further assessment of all district children, including culturally or linguistically diverse children, children from low socioeconomic backgrounds, children with disabilities, and children for whom English is a second language.

### *Stage II*

#### Assessment for Screening

The screening stage examines the data gathered from the pre-assessment stage and determines if additional assessment is necessary.

In making decisions about additional assessment, existing test data for students is not the sole determining criteria. School personnel examine all available information about a student to determine if any evidence of possible giftedness exists for that student and conduct necessary additional assessment.

District-determined cut-off scores move students from the screening stage to the identification stage. Parents must be notified within 30 school days of the results of the screening.

Screening scores are set lower than identification scores

### *Stage III*

#### Assessment for Identification

Assessment strategies provide additional data necessary for an identification decision. Strategies for additional assessment include the individual and group testing requirements of Sections 3324.01-3324.07 of the Ohio Revised Code; and as described in the Gifted Identification pamphlet.

Once additional assessment has been completed, the data obtained throughout the stages are evaluated. The identification decision is made and student’s educational needs are determined.

## Referral

The district ensures there are ample and appropriate scheduling procedures for assessments and reassessment using:

- Group tests;
- Individually-administered tests;
- Audition, Performance;
- Display of work;
- Exhibition; and
- Checklists.

Children may be referred on an ongoing basis, based on the following:

- Child request (self-referral);
- Teacher recommendation;
- Parent/guardian request;
- Child referral of peer; and
- Other (e.g., psychologist, community members, principal, gifted coordinator)

Upon receipt of a referral, the district will:

- Follow the process as outlined in this brochure; and
- Notify parents of results of screening or assessment and identification.

The district shall provide at least two opportunities a year for assessment in the case of children requesting assessment or recommended for assessment by teachers, parents, or other children.

## General

The district accepts scores on assessment instruments approved for use by the Ohio Department of Education provided by other school districts and/or trained personnel outside the school district.

## Transfer

The district ensures that any child transferring into the district will be assessed within 90 days of the transfer at the request of the parent. Parents shall contact the building principal.